

# Nintendo Co., Ltd Q1FY25 Report Overview

Research. August 2, 2024. All rights reserved by Data40 Ltd. Researcher: [Data40.com](https://data40.com)

Goals and Objectives of the Research	2
Disclaimers	2
Document Markup	2
Conclusions	3
General Information	3
About Company	4
Conference Call Information	4
Public Quarterly Reports Calendar FY25-26	5
Highlights and Metrics	6
Q1FY25 Highlights	6
Acquisitions and Divestitures	6
Business Overview	7
Business Outlook	9
Stock Information	10
About Shares	10
TradingView Retrospective Q1FY25	10
Financial Statements	11
Revenue Retrospective	11
Sales per Platforms	12
Sales per Region	14
Dividend Information	15
Balance Sheet	16
Income Statement	17
Cashflow Statement	17
News	18
Analyst's Opinion	23
Summary	23
Sources List	24
META	25

## Goals and Objectives of the Research

Research Objective: To perform a comparative analysis of the Q1FY25 quarterly report and those of previous periods.

Research Tasks:

- Gather comprehensive financial and corporate information pertaining to the company for Q1FY25;
- Analyze the collected information;
- Conduct a comparative assessment of the report for the Q1FY25 with reports for previous quarters up to the Q1FY24;
- Formulate conclusions based on the analyzed data.

## Disclaimers

The information collected in this report reflects data from the company's public reports and is not questioned or verified via other sources. In other words, information from the company's public reports is taken and used as is.

If additional information from other sources is used or if the data used is reflective of the researcher's personal opinion, this will be labeled accordingly.

The provided public company quarterly reports are unaudited.

## Document Markup

- FY - Financial Year;
- Q - Quarter;
- Nintendo - Nintendo Co., Ltd;
- This report uses the American number format: a period is used as the decimal separator, while commas separate thousands;
- Year-over-year (YoY) calculations of relative values were not performed in cases where last year's profit changed to a loss in the current year and vice versa within the scope of the current report;
- Nintendo Co., Ltd Q1FY25 Report Period is from April 1 to June 30, 2024.

## Conclusions

### General Information

Parameter	Nintendo Co., Ltd
Website	<a href="https://nintendo.com">nintendo.com</a>
Country (location)	<a href="#">Japan</a>
Country (issuer)	<a href="#">Japan</a> *
Year of foundation	<a href="#">1889</a> **
Founder	<a href="#">Fusajiro Yamauchi</a>
Sector	<a href="#">Manufacture and sale of home entertainment products</a>
Type	Public
Year of IPO	<a href="#">1983</a>
Stock market	<a href="#">JPX (TSE)</a>
Ticker	<a href="#">7974</a> *
Previous Annual Report from Data40	<a href="#">Nintendo Co., Ltd Full Fiscal Year 2024 Report Overview</a>
Previous Quarterly Report from Data40	<a href="#">Nintendo Co., Ltd Q4FY24 Report Overview</a>

\*Note: To access the information on the Tokyo Stock Exchange, enter the company name in the "Issue name (company name)" field and click "Search".

\*\*Note: Nintendo was founded in 1889, it was incorporated in 1947.

## About Company<sup>1 2</sup>

Nintendo Co., Ltd. - is a Japanese multinational video game company headquartered in Kyoto. engage in the development, manufacture and sale of entertainment products. Nintendo was founded in 1889 and originally produced handmade hanafuda playing cards. Nintendo's major products are categorized into computer-enhanced "dedicated video game platforms," character merchandise and playing cards. Nintendo has produced consoles: the Game Boy, the Super Nintendo Entertainment System, the Nintendo DS, the Wii, and the Switch. It has created and/or published franchises: Mario, Donkey Kong, The Legend of Zelda, Metroid, Fire Emblem, Kirby, Star Fox, Pokémon, Super Smash Bros., Animal Crossing, Xenoblade Chronicles, and Splatoon. Nintendo and its staff have received awards: "Emmy Awards for Technology & Engineering", "Game Awards", "Game Developers Choice Awards", and "British Academy Games Awards".

## Conference Call Information<sup>3</sup>

Nintendo Co., Ltd **Financial Results Q1FY25** and Financial Results Explanatory Material Q1FY25 and other materials for investors were announced on **August 2, 2024**.

---

<sup>1</sup> [Wikipedia, Nintendo](#)

<sup>2</sup> [Nintendo Annual Report 2024, p.5](#)

<sup>3</sup> [Nintendo Web, IR News](#)

Public Quarterly Reports Calendar FY25-26<sup>4</sup> <sup>5</sup>

Quarter	Period	Date*
FY25		
Q1	Apr 1, 2024 to Jun 30, 2024	Aug 2, 2024
Q2	Jul 1, 2024 to Sep 30, 2024	Nov 4, 2024 (Projected)
Q3	Oct 1, 2024 to Dec 31, 2024	Jan 29, 2025 (Projected)
Q4 and FY25	Jan 1, 2025 to Mar 31, 2025	May 12, 2025 (Projected)
FY26		
Q1	Apr 1, 2025 to Jun 30, 2025	TBA
Q2	Jul 1, 2025 to Sep 30, 2025	TBA
Q3	Oct 1, 2025 to Dec 31, 2025	TBA
Q4 and FY26	Jan 1, 2026 to Mar 31, 2026	TBA

Follow the announcements of the release of new reports on the website [Data40.com](https://data40.com) in the [Calendars by Financial reports section of DATA40.com](#).

\*Note: The dates are from the company's website in the GMT +9 time zone.

<sup>4</sup> [Nintendo Web, IR Information](#)

<sup>5</sup> [Marketscreener, Nintendo Calendar](#)

## Highlights and Metrics

### Q1FY25 Highlights<sup>6 7 8</sup>

- **Net sales** of 246,638 million YEN, decreased by 10.98% compared to 277,069 million YEN in Q4FY24 and decreased by 46.54% compared to 461,341 million YEN in Q1FY24;
- **Operating profit** of 152,460 million YEN decreased by 13.42% compared to 176,099 million YEN in Q4FY24 and decreased by 45.76% compared to 281,098 million YEN in Q1FY24;
- **Profit attributable to owners of the parent company** of 80,954 million YEN decreased by 1.95% compared to 82,561 million YEN in Q4FY24 and decreased by 55.28% compared to 181,019 million YEN in Q1FY24;
- **Total assets** of 3,180,510 million YEN increased by 0.92% compared to 3,151,394 million YEN in Q4FY24 and increased by 6.09% compared to 2,997,942 million YEN in Q1FY24;
- **Total liabilities** of 592,580 million YEN, increased by 8.45% compared to 546,396 million YEN in Q4FY24 and decreased by 6.85% compared to 636,169 million YEN in Q1FY24;
- **Total equity** of 2,587,929 million YEN decreased by 0.66% compared to 2,604,998 million YEN in Q4FY24 and increased by 9.58% compared to 2,361,772 million YEN in Q1FY24.

### Acquisitions and Divestitures

**On May 21, 2024, Nintendo acquired Shiver**, a developer of console and PC-based games, founded in 2012 and located in Miami. Nintendo acquired 100% of the company's shares.<sup>9</sup>

---

<sup>6</sup> [Nintendo Consolidated Financial Results Q1FY25, p.4-5](#)

<sup>7</sup> [Nintendo Consolidated Financial Results FY24, p.7](#)

<sup>8</sup> [Nintendo Consolidated Financial Results Q3FY24, p.4-5](#)

<sup>9</sup> [Tracxn, List of Acquisitions of Nintendo](#)

- **Paper Mario: The Thousand-Year Door sales** amounted to 1.76 million units;
- **Luigi's Mansion 2 HD sales** amounted to 1.19 million units;
- **Nintendo Switch platform sales** of 222,824 million YEN decreased by 9.43% compared to 246,032 million YEN in Q4FY24 and decreased by 47.07% compared to 420,961 million YEN in Q1FY24;
- **Others Dedicated video game platform sales** of 6,252 million YEN decreased by 42.14% compared to 10,806 million YEN in Q4FY24 and decreased by 4.18% compared to 6,525 million YEN in Q1FY24;
- **Mobile, IP related income, etc. sales** of 14,709 million YEN decreased by 15.95%, compared to 17,500 million YEN in Q4FY24 and decreased by 53.83% compared to 31,857 million YEN in Q1FY24;
- **Sales in Japan** of 63,538 million YEN decreased by 2.83% compared to 65,387 million YEN in Q4FY24 and decreased by 31.15% compared to 92,280 million YEN in Q1FY24;
- **Sales in The Americas** of 110,406 million YEN decreased by 14.80% compared to 129,584 million YEN in Q4FY24 and decreased by 46.34% compared to 205,734 million YEN in Q1FY24;
- **Sales in Europe** of 52,423 million YEN decreased by 7.42% compared to 56,625 million YEN in Q4FY24 and decreased by 50.31% compared to 105,506 million YEN in Q1FY24;
- **Sales in Other Regions** of 20,271 million YEN decreased by 20.42% compared to 25,474 million YEN in Q4FY24 and decreased by 64.94% compared to 57,819 million YEN in Q1FY24.

In Q1FY25 Nintendo released the following games:<sup>14</sup>

- Endless Ocean Luminous (May 2, 2024);
- Paper Mario: The Thousand-Year Door (May 23, 2024);
- Luigi's Mansion 2 HD (June 27, 2024).

---

<sup>10</sup> [Nintendo Consolidated Financial Results Q1FY25, p.3](#)

<sup>11</sup> [Nintendo Financial Results Explanatory Material Q1FY25, p.19](#)

<sup>12</sup> [Nintendo Consolidated Financial Results FY24, p.13](#)

<sup>13</sup> [Nintendo Consolidated Financial Results Q3FY24, p.8](#)

<sup>14</sup> [Nintendo Financial Results Explanatory Material Q1FY25, p.22](#)

# Announced Titles for 2024-2025<sup>15</sup>

Announced Titles	
Title	Launch date*
Nintendo World Championships: NES Edition	<a href="#">Jul 18, 2024</a>
Emio – The Smiling Man: Famicom Detective Club	<a href="#">Aug 29, 2024</a>
The Legend of Zelda: Echoes of Wisdom	<a href="#">Sep 26, 2024</a>
Super Mario Party™ Jamboree	<a href="#">Oct 17, 2024</a>
Mario & Luigi: Brotherhood	<a href="#">Nov 7, 2024</a>
Donkey Kong Country Returns HD	<a href="#">Jan 16, 2025</a>
Pokémon Legends: Z-A	<a href="#">2025</a>
Metroid Prime 4: Beyond	<a href="#">2025</a>

\*Note: Launch dates, titles, etc. are subject to change. Release dates may differ by region.

<sup>15</sup> [Nintendo Financial Results Explanatory Material Q1FY25, p.22](#)



## Business Outlook<sup>16</sup>

“There are no changes to the original financial forecast for this fiscal year that was published on May 7, 2024. For hardware, by continuing to convey the appeal of Nintendo Switch, we try to not only put one system in every home, but several in every home, or even one for every person. Another objective is to continually release new offerings so more consumers keep playing Nintendo Switch even longer and we can maximize hardware sales.”<sup>17</sup>

### Nintendo's plans and Initiatives:

- The new Super Mario animated film is planned to be released in Japan on April 24, 2026, and on April 3, 2026, in the U.S;
- Nintendo collaborated with Arad Productions Inc. to develop a live-action film of The Legend of Zelda;
- Preparations are underway to open Donkey Kong Country, an area that will expand Super Nintendo World at Universal Studios Japan in the second half of 2024;
- The Nintendo Museum is scheduled to open in the fall of 2024 in Uji City, Kyoto;
- Nintendo is scheduled to open a second official store in the United States “Nintendo San Francisco” in 2025.

---

<sup>16</sup> [Nintendo Financial Results Explanatory Material Q1FY25, p.16-17](#)

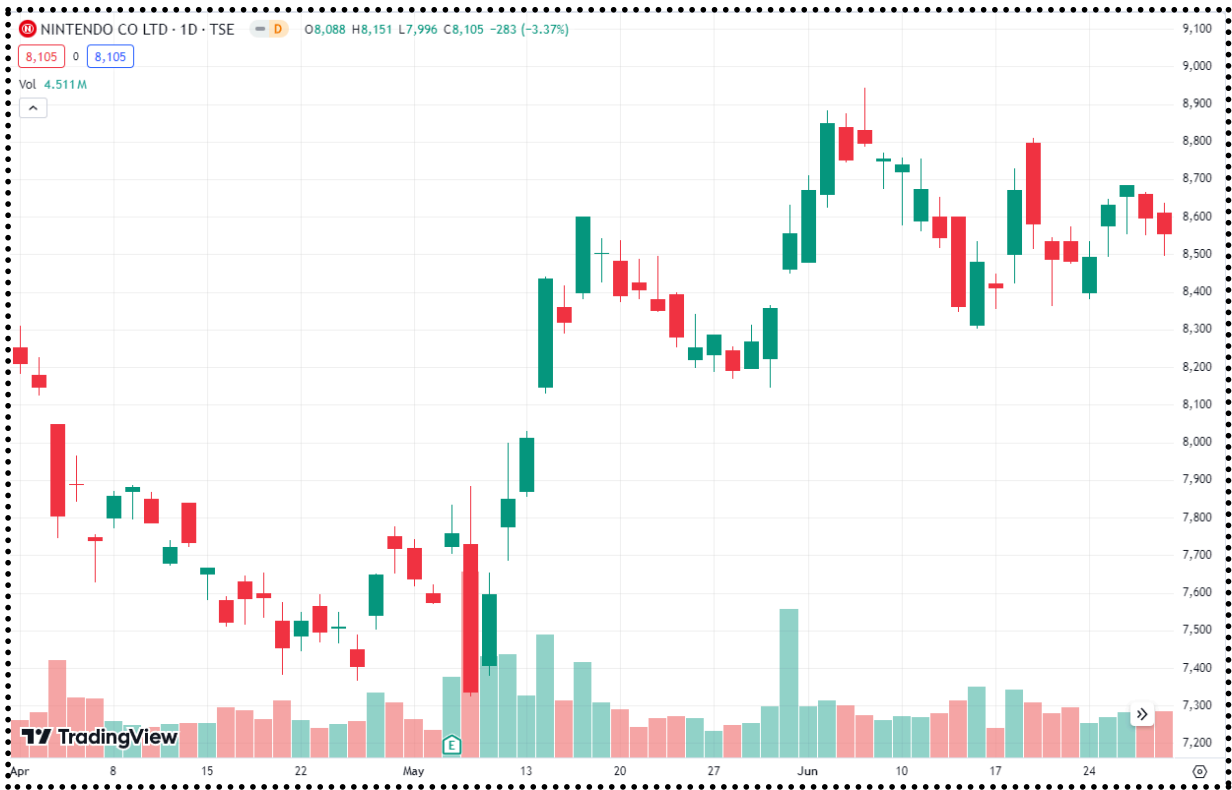
<sup>17</sup> In this chapter, quotes are used from the [Nintendo Consolidated Financial Results Q1FY25, p.3](#)

Stock Information

About Shares<sup>18</sup>

Number of shares outstanding (including treasury shares) - 1,298,690,000 (as of June 30, 2024).

TradingView Retrospective Q1FY25<sup>19</sup>



Date	Open Price, YEN	Highest Price, YEN	Lowest Price, YEN	Close Price, YEN
Apr 1, 2024	8,253.00	8,309.00	8,181.00	8,210.00
Jun 28, 2024	8,610.00	8,637.00	8,496.00	8,556.00

Q1FY25 Price MAX: 8,944.00 YEN (June 6, 2024).

Q1FY25 Price MIN: 7,323.00 YEN (May 8, 2024).

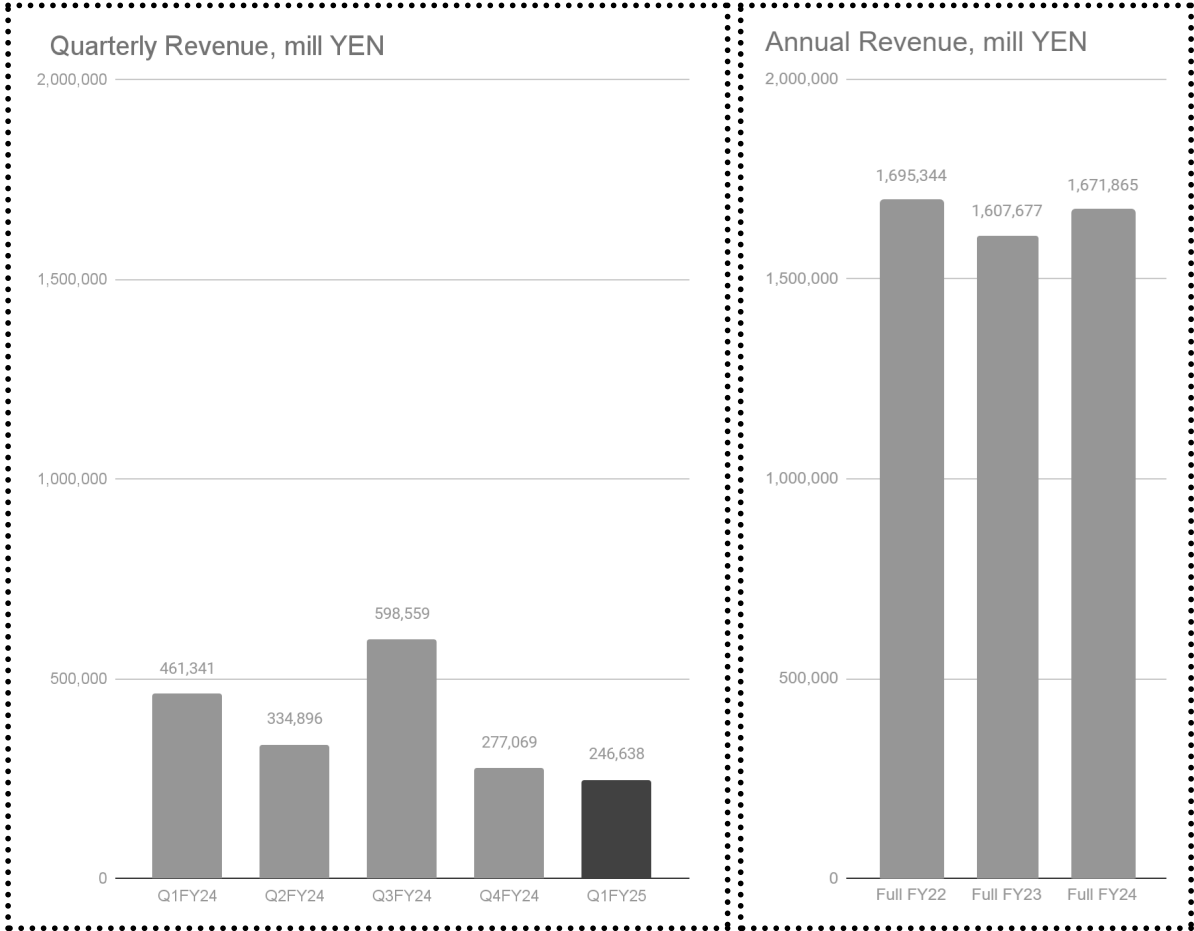
<sup>18</sup> [Nintendo Consolidated Financial Results Q1FY25, p.2](#)

<sup>19</sup> [TradingView, Nintendo Chart](#)

# Financial Statements

## Revenue Retrospective<sup>20 21 22 23 24</sup>

### Nintendo Co., Ltd Revenue Retrospective



<sup>20</sup> [Nintendo Consolidated Financial Results Q1FY25, p.1](#)  
<sup>21</sup> [Nintendo Consolidated Financial Results FY24, p.1](#)  
<sup>22</sup> [Nintendo Consolidated Financial Results Q3FY24, p.1](#)  
<sup>23</sup> [Nintendo Consolidated Financial Results Q2FY24, p.1](#)  
<sup>24</sup> [Nintendo Consolidated Financial Results FY23, p.1](#)

## Sales per Platforms<sup>25 26 27 28</sup>

### Sales Volume by Platforms

(In million, except Percentages)

Parameter	Q1FY25, YEN	QoQ, %	Q4FY24, YEN	QoQ, %	Q3FY24, YEN	QoQ, %	Q2FY24, YEN	QoQ, %	Q1FY24, YEN	YoY, %
Nintendo Switch platform	222,824	-9.43	246,032	-56.30	563,037	86.18	302,408	-28.16	420,961	-47.07
Others Dedicated video game platform	6,252	-42.14	10,806	-3.36	11,182	62.69	6,873	5.33	6,525	-4.18
Mobile, IP related income, etc.	14,709	-15.95	17,500	-13.53	20,238	-12.59	23,153	-27.32	31,857	-53.83
Other	2,851	4.36	2,732	-33.40	4,102	66.54	2,463	23.40	1,996	42.84
<b>Total Consolidated Revenue</b>	<b>246,638</b>	<b>-10.98</b>	<b>277,069</b>	<b>-53.71</b>	<b>598,559</b>	<b>78.73</b>	<b>334,896</b>	<b>-27.41</b>	<b>461,341</b>	<b>-46.54</b>

<sup>25</sup> [Nintendo Financial Results Explanatory Material Q1FY25, p.19](#)

<sup>26</sup> [Nintendo Consolidated Financial Results FY24, p.13](#)

<sup>27</sup> [Nintendo Consolidated Financial Results Q3FY24, p.8](#)

<sup>28</sup> [Nintendo Consolidated Financial Results Q2FY24, p.8](#)

### Net Revenue Structure Percentages

Parameter	Q1FY25, %	Q4FY24, %	Q3FY24, %	Q2FY24, %	Q1FY24, %
Nintendo Switch platform	90.34	88.80	94.07	90.30	91.25
Others Dedicated video game platform	2.53	3.90	1.87	2.05	1.41
Mobile, IP related income, etc.	5.96	6.32	3.38	6.91	6.91
Other	1.16	0.99	0.69	0.74	0.43

## Sales per Region<sup>29 30 31 32</sup>

### Sales by Region

(In million, except Percentages)

Parameter	Q1FY25, YEN	QoQ, %	Q4FY24, YEN	QoQ, %	Q3FY24, YEN	QoQ, %	Q2FY24, YEN	QoQ, %	Q1FY24, YEN	YoY, %
Japan	63,538	-2.83	65,387	-47.58	124,727	55.41	80,257	-13.03	92,280	-31.15
The Americas	110,406	-14.80	129,584	-50.85	263,655	85.18	142,377	-30.80	205,734	-46.34
Europe	52,423	-7.42	56,625	-66.18	167,419	119.76	76,183	-27.79	105,506	-50.31
Other	20,271	-20.42	25,474	-40.42	42,757	18.51	36,080	-37.60	57,819	-64.94
<b>Total Consolidated Revenue</b>	<b>246,638</b>	<b>-10.98</b>	<b>277,069</b>	<b>-53.71</b>	<b>598,559</b>	<b>78.73</b>	<b>334,896</b>	<b>-27.41</b>	<b>461,341</b>	<b>-46.54</b>

<sup>29</sup> [Nintendo Financial Results Explanatory Material Q1FY25, p.19](#)

<sup>30</sup> [Nintendo Consolidated Financial Results FY24, p.13](#)

<sup>31</sup> [Nintendo Consolidated Financial Results Q3FY24, p.8](#)

<sup>32</sup> [Nintendo Consolidated Financial Results Q2FY24, p.8](#)

### Sales Volume by Platforms Percentages

Parameter	Q1FY25, %	Q4FY24, %	Q3FY24, %	Q2FY24, %	Q1FY24, %
Japan	25.76	23.60	20.84	23.96	20.00
The Americas	44.76	46.77	44.05	42.51	44.59
Europe	21.26	20.44	27.97	22.75	22.87
Other	8.22	9.19	7.14	10.77	12.53

### Dividend Information<sup>33 34 35</sup>

(In million, except Per share data and Percentages)

Parameter	Q1FY25, YEN	QoQ, %	Q4FY24, YEN	QoQ, %	Q3FY24, YEN	QoQ, %	Q2FY24, YEN	QoQ, %	Q1FY24, YEN	YoY, %
Per share	-	-	131 YEN	-	-	-	80 YEN	-	-	-
Cash dividends declared	-	-	152,515	-	-	-	93,139	-	-	-

“Dividends are paid twice a year after the end of the second quarter and at the fiscal year-end based on profit levels achieved in each fiscal year as our basic policy.”<sup>36</sup>

<sup>33</sup> [Nintendo Consolidated Financial Results Q1FY25, p.1](#)

<sup>34</sup> [Nintendo Notice of Dividend Q4FY24](#)

<sup>35</sup> [Nintendo Notice of Dividend Q2FY24](#)

<sup>36</sup> Quote is used from the [Nintendo Consolidated Financial Results Q1FY25, p.1](#)

# Balance Sheet<sup>37 38 39 40</sup>

(In million, except Percentages)

Parameter	at Jun 30, 2024, YEN	QoQ, %	at Mar 31, 2024, YEN	QoQ, %	at Dec 31, 2023, YEN	QoQ, %	at Sep 30, 2023, YEN	QoQ, %	at Jun 30, 2023, YEN	YoY, %
Assets										
Total Current Assets	2,574,713	0.05	2,573,302	2.06	2,521,357	-3.26	2,606,440	6.16	2,455,195	4.87
Total Non-Current Assets	605,796	4.79	578,092	4.66	552,361	-2.07	564,035	3.92	542,746	11.62
Total Assets	3,180,510	0.92	3,151,394	2.53	3,073,719	-3.05	3,170,476	5.76	2,997,942	6.09
Liabilities										
Total Current Liabilities	524,279	9.39	479,276	-9.50	529,599	-17.06	638,552	11.33	573,571	-8.59
Total Non-Current Liabilities	68,300	1.76	67,119	4.00	64,538	2.02	63,259	1.06	62,597	9.11
Total Liabilities	592,580	8.45	546,396	-8.04	594,137	-15.34	701,812	10.32	636,169	-6.85
<b>Total Equity</b>	<b>2,587,929</b>	<b>-0.66</b>	<b>2,604,998</b>	<b>5.06</b>	<b>2,479,582</b>	<b>0.44</b>	<b>2,468,664</b>	<b>4.53</b>	<b>2,361,772</b>	<b>9.58</b>

<sup>37</sup> [Nintendo Consolidated Financial Results Q1FY25, p.4](#)

<sup>38</sup> [Nintendo Consolidated Financial Results Q3FY24, p.4](#)

<sup>39</sup> [Nintendo Consolidated Financial Results Q2FY24, p.4](#)

<sup>40</sup> [Nintendo Consolidated Financial Results Q1FY24, p.4](#)



## Income Statement<sup>41 42 43 44</sup>

(In million, except EPS data and Percentages)

Parameter	Q1FY25, YEN	QoQ, %	Q4FY24, YEN	QoQ, %	Q3FY24, YEN	QoQ, %	Q2FY24, YEN	QoQ, %	Q1FY24, YEN	YoY, %
Net sales	246,638	-10.98	277,069	-53.71	598,559	78.73	334,896	-27.41	461,341	-46.54
Gross Profit	152,460	-13.42	176,099	-42.49	306,203	60.37	190,935	-32.08	281,098	-45.76
Operating Expenses	97,950	-12.21	111,567	-8.33	121,703	26.16	96,467	0.85	95,656	2.40
Operating Profit	54,510	-15.53	64,531	-65.02	184,500	95.30	94,469	-49.06	185,441	-70.61
Profit attributable to owners of parent	80,954	-1.95	82,561	-39.62	136,743	51.47	90,279	-50.13	181,019	-55.28
Profit per share	69.53 YEN	-1.95	70.91 YEN	-39.63	117.45 YEN	51.45	77.55 YEN	-50.12	155.48 YEN	-55.28
Diluted profit per share	69.53 YEN	-1.93	70.90 YEN	-39.63	117.45 YEN	51.45	77.55 YEN	-50.12	155.48 YEN	-55.28

## Cashflow Statement

The company does not provide cash flow information in its quarterly results. Annual cash flow information is available in [Nintendo Consolidated Financial Results FY24, p.11](#).

<sup>41</sup> [Nintendo Consolidated Financial Results Q1FY25, p.1, 5](#)

<sup>42</sup> [Nintendo Consolidated Financial Results FY24, p.1, 7](#)

<sup>43</sup> [Nintendo Consolidated Financial Results Q3FY24, p.1, 5](#)

<sup>44</sup> [Nintendo Consolidated Financial Results Q2FY24, p.1, 5](#)

## News<sup>45</sup>

April 1, 2024 - [Welcome to the WAH-nderful world of Waluigi](#)

April 2, 2024 - [Play the 39th MAXIMUS CUP online event and you could earn an in-game collaborative theme!](#)

April 4, 2024 - [Try before you buy with these free demos of recent games!](#)

April 5, 2024 - [Freshen up for Spring Fest in Splatoon 3 with new in-game gear](#)

April 9, 2024 - [Donkey Kong has toy-napped the Mini-Marios! Can you get them back?!](#)

April 11, 2024 - [New update for Nintendo Switch Online members!](#)

April 11, 2024 - [Go on an adventure with these delightful companions!](#)

April 16, 2024 - [Try the latest Game Trial, NBA 2K24 Kobe Bryant Edition](#)

April 16, 2024 - [Uncover the mysteries \(and dangers\) of the backyard!](#)

April 17, 2024 - [Indie games burst onto Nintendo Switch promising adventure, cozy vibes, and curious cat mischief](#)

April 17, 2024 - [Indie Sale: Save up to 50% on select digital games](#)

April 18, 2024 - [Here are a few tips before you take the stage!](#)

April 22, 2024 - [And the latest Splatfest winner is...](#)

April 23, 2024 - [New update for Nintendo Switch Online + Expansion Pack members!](#)

April 23, 2024 - [Free Pikmin 4 coloring pages available from Play Nintendo](#)

April 23, 2024 - [Become a warrior shaman in Tales of Kenzera: ZAU](#)

April 24, 2024 - [Soak in the cozy sights and sounds of Endless Ocean Luminous with this video](#)

April 25, 2024 - [Secrets, enemies, and trash? Sounds like a job for a hermit crab!](#)

April 26, 2024 - [Fire Emblem Heroes kicks off Golden Week events](#)

April 26, 2024 - [Watch the new overview trailer for the Paper Mario: Thousand-Year Door game!](#)

---

<sup>45</sup> [Nintendo Web, News](#)

April 27, 2024 - [Happy birthday, Kirby!](#)

April 30, 2024 - [Coming soon! Nintendo Switch games arriving in May 2024](#)

April 30, 2024 - [My Nintendo April Wrap-Up](#)

April 30, 2024 - [You may not want to miss out on these gems!](#)

May 1, 2024 - [Splatoon 3 DLC: What to know before you get started!](#)

May 1, 2024 - [Discover the free Thrills & Frills update and paid Act II of the expansion pass in Disney Dreamlight Valley](#)

May 1, 2024 - [Icon elements inspired by the Endless Ocean Luminous game are here for a limited time!](#)

May 1, 2024 - [BlackMilk Clothing to release new The Legend of Zelda™ collection](#)

May 2, 2024 - [Explore underwater regions with other players online in the Endless Ocean Luminous game](#)

May 2, 2024 - [Take the plunge in games with swimming](#)

May 2, 2024 - [Explore an underwater world, swim with friends, and find your flow in Endless Ocean Luminous](#)

May 2, 2024 - [Universal Orlando resort unveils exciting new details about its most colorful and interactive experience yet – SUPER NINTENDO WORLD – coming to Universal Epic Universe in 2025](#)

May 3, 2024 - [Try the latest Game Trial, STAR WARS: Knights of the Old Republic](#)

May 4, 2024 - [Celebrate Star Wars Day with these galactic games!](#)

May 6, 2024 - [These characters are on a mother level!](#)

May 7, 2024 - [Play the 40th MAXIMUS CUP online event and you could earn an in-game collaborative theme!](#)

May 8, 2024 - [Nintendo brings home white knuckle speedrun competition with Nintendo World Championships: NES Edition!](#)

May 9, 2024 - [Explore the haunting world of Animal Well \(and read some tips from the developer\)](#)

May 9, 2024 - [Feline like an adventure? Pounce into Little Kitty, Big City!](#)

May 10, 2024 - [Pikmin Bloom celebrates 2.5 years of fun with anniversary events](#)

May 13, 2024 - [Splatoon 3: The next Splatfest has some apocalyptic ambitions...](#)

May 13, 2024 - [Put your skills to the test in these upcoming NintendoVS events!](#)

May 14, 2024 - [Icon elements inspired by The Legend of Zelda™: Tears of the Kingdom game are here for a limited time!](#)

May 14, 2024 - [New update for Nintendo Switch Online members!](#)

May 15, 2024 - [Celebrate 15 years of Minecraft with a special sale!](#)

May 16, 2024 - [7 new details in Paper Mario: The Thousand-Year Door!](#)

May 16, 2024 - [US Sports Camps and Nintendo Partner to Level Up Camp Experiences Across North America](#)

May 20, 2024 - [And the latest Splatfest winner is...](#)

May 22, 2024 - [Icon elements inspired by the Paper Mario: The Thousand-Year Door game are here for a limited time!](#)

May 22, 2024 - [Go off the beaten path with these offbeat rides!](#)

May 23, 2024 - [Join Mario and a cast of oddballs in one of his strangest \(and epic-est\) RPG adventures!](#)

May 24, 2024 - [Super Mario Run folds in limited-time missions celebrating Paper Mario: The Thousand-Year Door](#)

May 24, 2024 - [Nintendo Announces Plans for Official Store in San Francisco](#)

May 26, 2024 - [Paper Mario: The Thousand-Year Door takes flight with paper airplane world record holder—and you can too!](#)

May 28, 2024 - [It's a monster mash of building-sized proportions!](#)

May 28, 2024 - [Build the Legend: Introducing The Legend of Zelda Great Deku Tree 2-in-1 LEGO Set](#)

May 29, 2024 - [My Nintendo May Wrap-Up](#)

May 29, 2024 - [Coming soon! Nintendo Switch games arriving in June 2024](#)

May 31, 2024 - [This waggly wisp is hauntingly cute!](#)

May 31, 2024 - [Free update for Sizzle Season 2024 in Splatoon 3 brings a new battle stage, new weapons, and more!](#)

June 3, 2024 - [The Play Nintendo Tour invites fans of all ages to enjoy a summer of fun in cities across the U.S.](#)

June 4, 2024 - [Free download! Match up against the greatest Hunters from the Star Wars galaxy](#)

June 6, 2024 - [A mega new update for Nintendo Switch Online members!](#)

June 6, 2024 - [Save on the Splatoon 3 game and get a 3-month Nintendo Switch Online membership!](#)

June 6, 2024 - [Mega Extreme Fun Sale: Turn the fun up to 11 with savings on select games](#)

June 10, 2024 - [Animal Crossing: New Horizons aquarium partnership expands into a national tour](#)

June 11, 2024 - [My Nintendo™ SUPER NINTENDO WORLD™ One-year Anniversary Celebration Sweepstakes](#)

June 11, 2024 - [Join the father/son duo as they take on the competition](#)

June 13, 2024 - [Have a spooktacular season with Luigi in these haunted game locations!](#)

June 17, 2024 - [Free Pikmin 4 coloring pages available from Play Nintendo](#)

June 17, 2024 - [Dive into some tips for Endless Ocean Luminous!](#)

June 18, 2024 - [Icon elements inspired by the Metroid Prime Remastered game are here for a limited time!](#)

June 18, 2024 - [The Legend of Zelda: Echoes of Wisdom and Metroid Prime 4: Beyond for Nintendo Switch unveiled in latest Nintendo Direct presentation](#)

June 20, 2024 - [A free content update has arrived for Fae Farm](#)

June 20, 2024 - [Try the latest Game Trial, Darkest Dungeon](#)

June 21, 2024 - [Get in the ghost-gustin' spirit with a few basics for Luigi's Mansion 2 HD](#)

June 24, 2024 - [Play the 41st MAXIMUS CUP online event and you could earn an in-game collaborative theme!](#)

June 24, 2024 - [It's the fourth anniversary of Pokémon Café ReMix! Catch a Legendary Pokémon—and more!](#)

June 25, 2024 - [Coming soon! Nintendo Switch games arriving in July 2024](#)

June 26, 2024 - [Celebrate 10 years of the chivalrous adventurer, Shovel Knight!](#)

June 26, 2024 - [Icon elements inspired by the Luigi's Mansion 2 HD game are here for a limited time!](#)

June 27, 2024 - [Luigi's Mansion™ 2 HD is available n-AAAAAAH!](#)

June 27, 2024 - [My Nintendo June Wrap-Up](#)

June 28, 2024 - [Super Mario Run scares up limited-time missions celebrating Luigi's Mansion 2 HD](#)

# Analyst's Opinion

## Summary

Nintendo Co., Ltd is a Japanese company founded in 1889 with its headquarters in Kyoto. The company is involved in the development, manufacture, and sale of entertainment products. These products are divided into categories: computer-enhanced "dedicated video game platforms," character merchandise, and playing cards.

Nintendo has been traded on the Tokyo Stock Exchange since 1983 under the ticker 7974. The number of shares outstanding (including treasury shares) was 1,298,690,000 as of June 30, 2024. The trading range for the company's shares in Q1 FY25 was between 7,323.00 YEN and 8,944.00 YEN. The opening price on April 1, 2024, was 8,253.00 YEN, and the closing price on June 28, 2024, was 8,556.00 YEN. The company pays dividends twice a year, in Q2 and Q4.

On May 21, 2024, Nintendo acquired Shiver, a developer of console and PC-based games, founded in 2012 and located in Miami. Nintendo acquired 100% of the company's shares.

In Q1FY25 Nintendo released the following games: "Endless Ocean Luminous" (May 2, 2024), "Paper Mario: The Thousand-Year Door" (May 23, 2024), Luigi's Mansion 2 HD (June 27, 2024).

Net revenue of 246,638 million YEN for Q1FY25. A decrease of 10.98% compared to 277,069 million YEN for Q4FY24. A decrease of 46.54% compared to 461,341 million YEN for Q1FY24.

Sales per Platform in Q1FY25: 90.34% from Nintendo Switch platform at 222,824 million YEN, 5.96% from Mobile, IP related income, etc. at 14,709 million YEN, 2.53% from Others Dedicated video game platform at 6,252 million YEN, and 1.16% from Playing cards, etc. at 2,851 million YEN.

Total assets increased by 0.92% from 3,151,394 million YEN in Q4FY24 to 3,180,510 million YEN in Q1FY25. Total liabilities increased by 8.45% from 546,396 million YEN in Q4FY24 to 592,580 million YEN in Q1FY25. Total equity decreased by 0.66% from 2,604,998 million YEN in Q4FY24 to 2,587,929 million YEN in Q1FY25.

Nintendo announced titles for 2024-2025:

- Nintendo World Championships: NES Edition (July 18, 2024);
- Emio – The Smiling Man: Famicom Detective Club (August 29, 2024);
- The Legend of Zelda: Echoes of Wisdom (September 26, 2024);
- Super Mario Party™ Jamboree (October 17, 2024);
- Mario & Luigi: Brotherhood (November 7, 2024);
- Donkey Kong Country Returns HD (January 16, 2025);
- Pokémon Legends: Z-A (2025);
- Metroid Prime 4: Beyond (2025).

Follow the announcements of the release of new reports on the website [Data40.com](https://Data40.com) in the [Calendars by section DATA40.com](#).

## Sources List

- [Nintendo Web](#)
- [JPX](#)
- [Wikipedia](#)
- [MarketScreener](#)
- [Tracxn Web](#)
- [TradingView](#)
- [Nintendo Consolidated Financial Results Q1FY25](#)
- [Nintendo Consolidated Financial Results FY24](#)
- [Nintendo Consolidated Financial Results Q3FY24](#)
- [Nintendo Consolidated Financial Results Q2FY24](#)
- [Nintendo Consolidated Financial Results Q1FY24](#)
- [Nintendo Consolidated Financial Results FY23](#)
- [Nintendo Financial Results Explanatory Material Q1FY25](#)
- [Nintendo Notice of Dividend Q4FY24](#)
- [Nintendo Notice of Dividend Q2FY24](#)
- [Data40](#)



META



Data40 - professional research agency. We do all kinds of researches in gaming, gamedev, gambling, venture and blockchain. 15+ years of experience in the field. Loyal price development, quick and informative results.

DCS/GD-D40/NIN9-Q1-03-2024

[Website: Data40.com](https://data40.com)

E-mail: [danila@data40.com](mailto:danila@data40.com)

Phone: +44 770-141-90-59

Address: 010000, Republic of Kazakhstan, Astana city, Yesil district, Dostyk street 20, office 1501

[More researches at https://data40.com/buy-data/](https://data40.com/buy-data/)

All rights reserved 2024